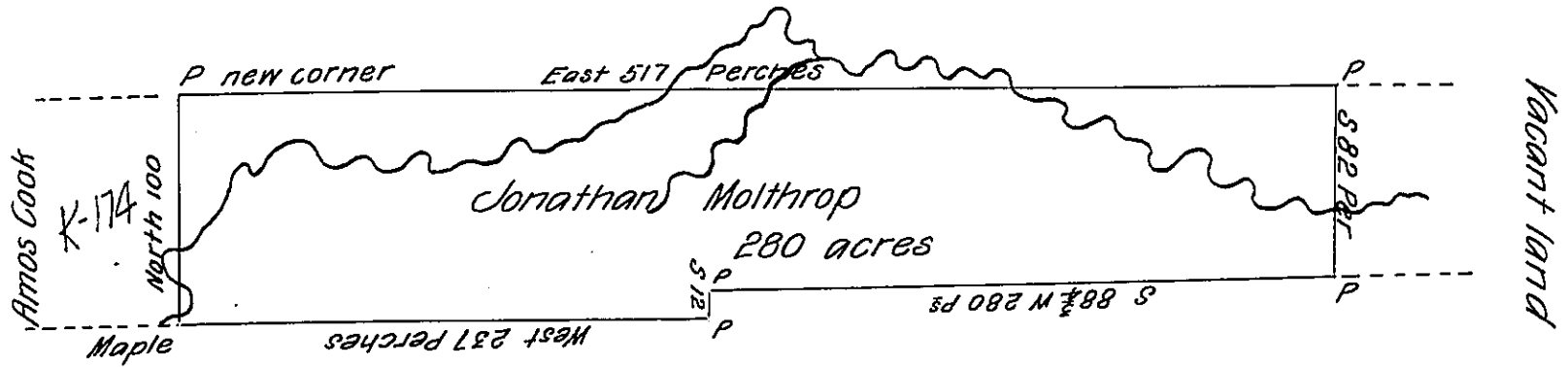


Population Company



David Power

Benjamin Chew

C-83-15

In pursuance of the Settlement of Levinus Cooper and the Sale by him to Jonathan Molthrop, was surveyed for the said Molthrop on the 4th day of November A. D. 1835, the above described tract of land, situate partly in Beaver Township Crawford County & partly in Conneautt township Erie Co. Containing 280 acres and allowance of Six per Cent for Roads &c.

Ebene^r Felton D. S.

Cyrinius E. Webster D. S.

Jacob Spangler Esq^r

Surveyor General.

IN TESTIMONY that the above is a copy of the original remaining on file in the Department of Internal Affairs of Pennsylvania, made conformably to an Act of Assembly approved the 16th day of February, 1833, I have hereunto set my Hand and caused the Seal of said Department to be affixed at Harrisburg, this eighth day of February, 1906.

G. C. Brown
 Secretary of Internal Affairs.